



### Suite Details

Project	Sugar Wharf (East Tower)
Suite Type	1 Bedroom
Size (sq.ft.)	487
Floor Plan	See P.2
Floor	21
Locker	None
Parking	None
Occupancy	Fall 2022

### Pricing Information

Assignment Price <b>(AP)</b>	<b>\$735,000</b>
Price / Sq.Ft.	\$1,509
Original Purchase Price <b>(OP)</b>	\$537,990
Deposit Paid to Developer By Seller	\$134,497

### Buyer's Sum of Payment

Seller's Profit <b>(AP - OP)</b>	\$197,010
Deposit Paid to Developer by Seller	\$134,497
<b>Total Payment</b>	<b>\$331,507</b>

### Payment Structure

<b>Deposit</b> Due Upon Offer Acceptance	\$150,000
<b>Remaining Balance</b> Due Upon Developer's Consent on Assignment	\$181,507

CondoWong Real Estate Inc., Brokerage

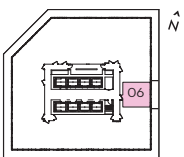
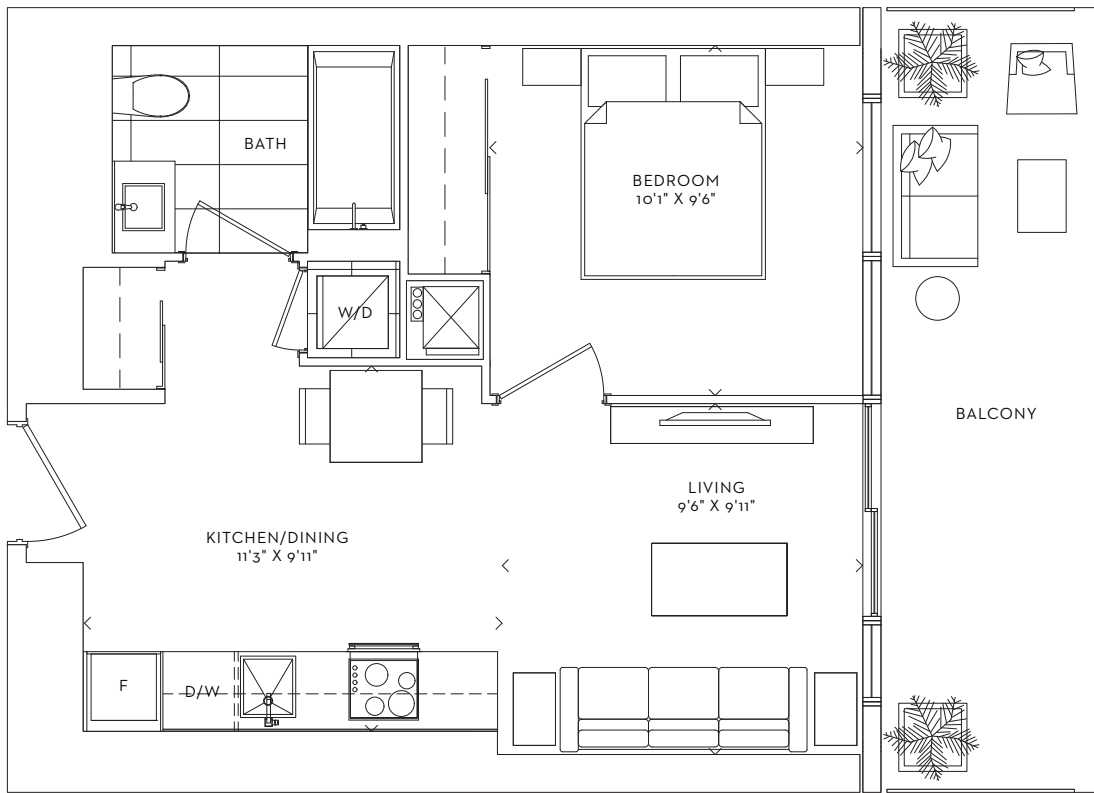
Dan Wong, Broker

+1 647.629.3838

Dan@CondoWong.ca



**BEACH**  
ONE BEDROOM  
INTERIOR 487 SF  
BALCONY 115 SF  
**TOTAL 602 SF**



FLOORS : 12 - 45



\*Prices, sizes and specifications subject to change without notice. E.&O.E. The dimensions shown of this plan are approximate and subject to normal construction variances. Actual useable floor space within the unit may vary from any stated floor areas or dimensions on this plan. Furniture is displayed for illustration purposes only and does not necessarily reflect the electrical plan for the suite. Suites are sold unfurnished. For more information on the method used for calculating the floor area of any unit, reference should be made to Builder Bulletin No. 22 published by Tarion.