



Suite Details

Project	Sugar Wharf (East Tower)
Suite Type	3 Bedrooms
Size (sq.ft.)	916
Floor Plan	See P.2
Floor	27/F, Unit 11
Locker	None
Parking	None
Occupancy	Early to Mid 2023

Pricing Information

Assignment Price (AP)	\$1,150,000
Price / Sq.Ft.	\$1,638
Original Purchase Price (OP)	\$1,099,990
Deposit Paid to Developer By Seller	\$440,000

Buyer's Sum of Payment

Seller's Profit (AP - OP)	\$50,010
Deposit Paid to Developer by Seller	\$440,000
Total Payment	\$490,010

Payment Structure

Deposit Due Upon Offer Acceptance	\$440,000
Remaining Balance Due Upon Developer's Consent on Assignment	\$50,010

CondoWong Real Estate Inc., Brokerage

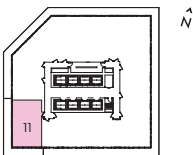
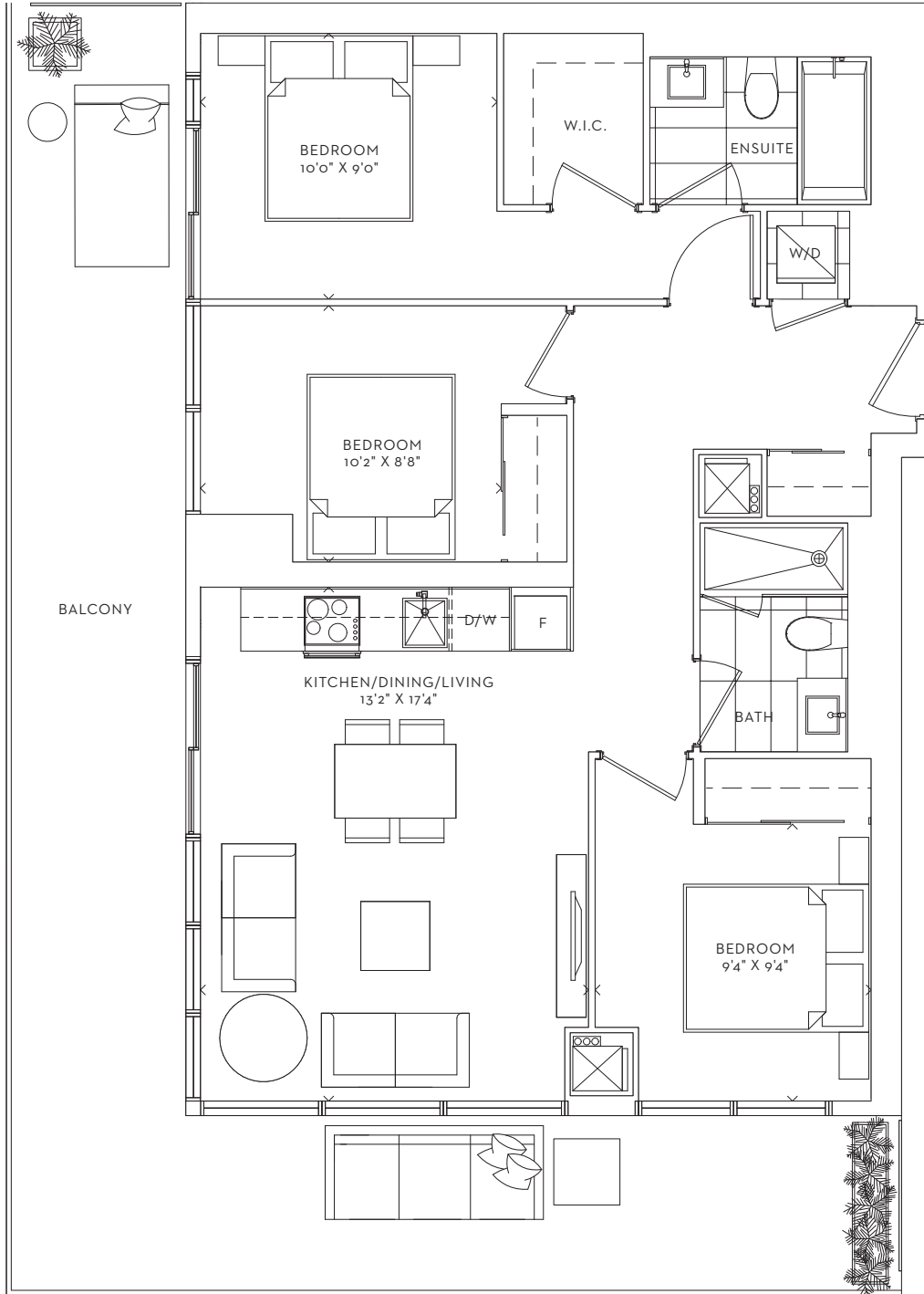
Dan Wong, Broker

+1 647.629.3838

Dan@CondoWong.ca



COVE
THREE BEDROOM
INTERIOR 916 SF
BALCONY 364 SF
TOTAL 1,280 SF



FLOORS : 12 - 45

