



### Suite Details

Project	Sugar Wharf (East Tower)
Suite Type	3 Bedrooms
Size (sq.ft.)	916
Floor Plan	See P.2
Floor	27/F, Unit 11
Locker	None
Parking	1
Occupancy	Early to Mid 2023

### Pricing Information

Assignment Price <b>(AP)</b>	<b>\$1,500,000</b>
Price / Sq.Ft.	\$1,638
Original Purchase Price <b>(OP)</b>	\$1,184,990
Deposit Paid to Developer By Seller	\$440,000

### Buyer's Sum of Payment

Seller's Profit <b>(AP - OP)</b>	\$315,010
Deposit Paid to Developer by Seller	\$440,000
<b>Total Payment</b>	<b>\$755,010</b>

### Payment Structure

<b>Deposit</b> Due Upon Offer Acceptance	\$440,000
<b>Remaining Balance</b> Due Upon Developer's Consent on Assignment	\$315,010

CondoWong Real Estate Inc., Brokerage

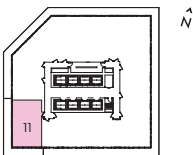
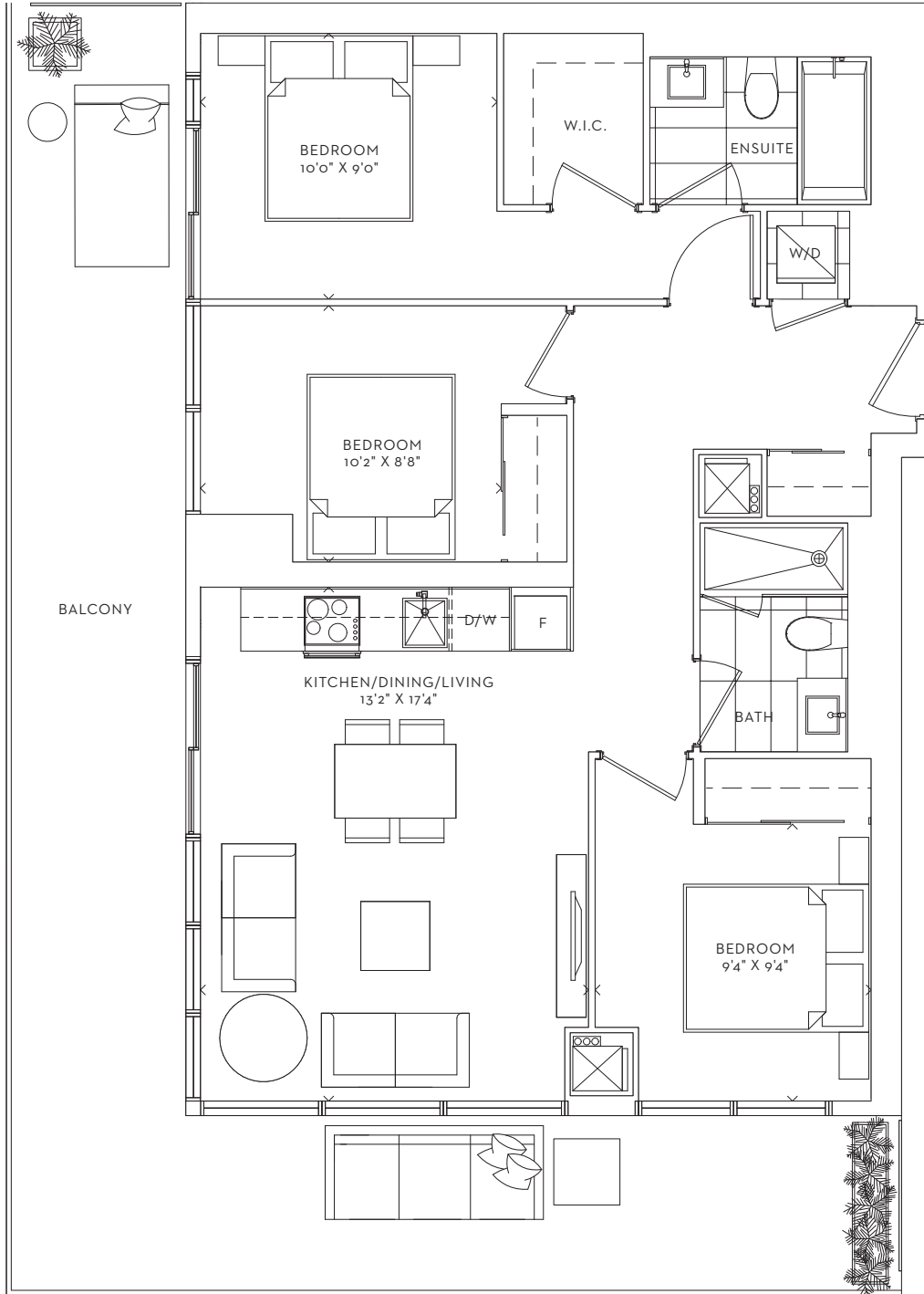
Dan Wong, Broker

+1 647.629.3838

Dan@CondoWong.ca



**COVE**  
THREE BEDROOM  
INTERIOR 916 SF  
BALCONY 364 SF  
**TOTAL 1,280 SF**



FLOORS : 12 - 45

